

# TestGenie™

**CORELIS**  
An *EWAVE* Company

## Complete Bundled JTAG Test Solution

Preferred Boundary-Scan Test Solutions—Acclaimed Technical Support



### Benefits

- Reduces the overall cost of entry for JTAG test
- Scales down engineering resource requirements
- Shortens boundary-scan implementation time
- Reduces the boundary-scan test software & technology learning curve
- Cuts risks associated with test
- Speeds time to market
- Removes engineering opportunity costs

### Features

- Complete ScanExpress test execution, diagnostic, and fault visualization system
- Customized, easy-to-use, turn-key test procedure for a single Unit Under Test (UUT)
- High quality Corelis USB JTAG Controller
- 12 month hardware and software support and maintenance agreement included
- Expandable to multiple test execution stations

The traditional model of owning JTAG boundary-scan tools outright and employing a resident expert to develop test procedures is not practical for a large number of companies. Those experienced in boundary-scan test know that the true cost of testing does not lie in the cost of the automated test tools themselves, but rather the investment that must be made in the engineering hours to accommodate this testing capability successfully. Yet there is a genuine need for boundary-scan test products and services for these organizations.

TestGenie is Corelis' solution for budget-conscious customers looking for full-featured Corelis ScanExpress boundary-scan tools at a fraction of the cost.

### Applications

#### • Low-Risk Test Development

Allow Corelis' experts to take on and reduce the risks involved with boundary-scan test procedure development.

#### • Scarce Engineering Resources

Whether short on budget, experience, or time, TestGenie's innovative product and service bundle can reduce test cost, development time, and engineering effort.

#### • Variable Cost Test

Transform boundary-scan test from a fixed cost to a project-specific, variable cost and avoid the need to amortize the total cost of testing.

#### • Tight Production Schedules

Use Corelis' decades of experience to your advantage—our test experts can quickly and accurately gauge the scope and risk of boundary-scan tests for a particular project and ensure that testing can be completed on schedule.

#### • Limited Number of Projects

Allow the cost of testing to scale with the number of products being tested—with the option to add additional execution stations.

Learn More: For more information about Corelis products, please visit [www.corelis.com](http://www.corelis.com)

**What is TestGenie?**

TestGenie bundles Corelis’ signature boundary-scan products and test services into a single, product-oriented package for use on an individual and specific Unit Under Test (UUT). Combining software and services enables TestGenie to provide a low risk, low cost, and reliable boundary-scan solution in a market where low cost tools usually take a full-time engineer to operate.

**Risk Reduction**

TestGenie is designed to minimize risk for companies looking to integrate boundary-scan testing into their process. The major risks of boundary-scan testing can be divided into four categories: **Cost**, **Experience**, **Schedule**, and **Resources**.

**Cost** – One thing that may not be clear is that although boundary-scan tools seem expensive, the tool cost is a small fraction of the overall cost of testing. The engineering costs required to integrate boundary-scan represent the larger bulk of the overall cost.

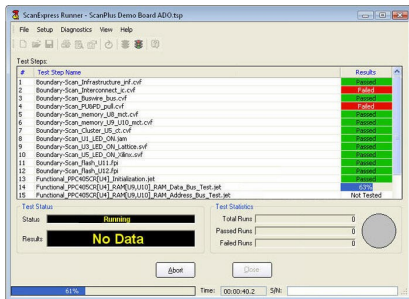
**Schedule** – JTAG should help solve your problems, not create new ones. To get the maximum benefit in terms of schedule and reduced time to market, boundary-scan must be integrated as early as possible in the design and development process. Waiting to deploy boundary-scan during test is a sure way to lengthen the schedule.

**Experience** – Similar to ICT, JTAG requires well-trained and highly experienced personnel to do well. There is no substitute for experience. Lack of experience directly corresponds to longer schedules, more required resources, and higher costs as a result.

**Resources** – Unless you are in a 100% slack environment, there will always be an opportunity cost for choosing to use in-house engineering resources and deploying boundary-scan yourself. Each company must ask the difficult question, “Do we have the manpower to take on the job and does it represent the best use of our time?”

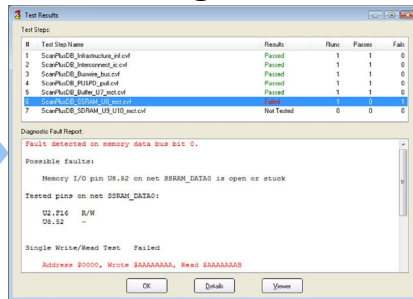


**Execute**



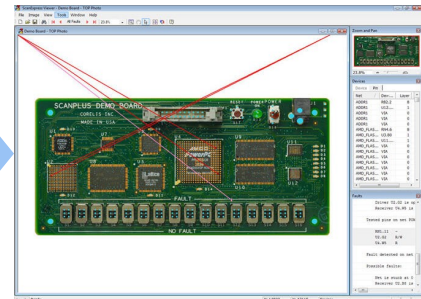
**ScanExpress Runner™**

**Diagnose**



**ScanExpress ADO™**

**Visualize**



**ScanExpress Viewer™**

In the arena of low-cost test solutions, only TestGenie provides you with fully automated, feature-complete versions of Corelis’ ScanExpress execution tools, specifically customized to run with your UUT. Contact Corelis today and see how TestGenie can do the work for you!

**The TestGenie System Includes:**

- Board specific perpetual licenses for **ScanExpress Runner**, **Advanced Diagnostics (ADO)**, and **ScanExpress Viewer**
- USB JTAG Controller
- 12 month hardware and software maintenance agreement
- Test procedure development for one PCB design<sup>1</sup>

For more information, visit [www.corelis.com/TestGenie](http://www.corelis.com/TestGenie)

**Ordering Information**

**Part Number—36000**

TestGenie Bundle with Test Procedure

**Part Number—36003**

TestGenie Additional Execution Station

**CORELIS**

13100 Alondra Blvd.

Cerritos, CA 90703, USA

Phone: +1 888-808-2380 (US & Canada)

Phone: +1 562-926-6727 (International)

Fax: +1 562-404-6196

[www.corelis.com](http://www.corelis.com)

<sup>1</sup> Certain restrictions apply.

TestGenie™, ScanExpress Runner™, ScanExpress ADO™, and ScanExpress Viewer™ are trademarks of Corelis, Inc. All other product or service names are the property of their respective owners.

© Copyright Corelis, Inc. 2010. All rights reserved. Corelis, Inc., reserves the right to make changes in design or specification at any time and without notice.

36000-DS VERSION 1.1 - 1/7/2011